

## Willerby Carr Lane Primary School - Art

**Topic:**

**Year: 4**

**Strand: Drawing**






### What should I already know?

- Create different lines with pencil, choose and use different grades of pencil to show tone, texture and line
- Use the skills of overlapping and overlaying
- Modify my work without using a rubber
- Proportions of the face

### What will I know / be able to do by the end of the unit?

Which media have artists used to create portraits?	<ul style="list-style-type: none"> <li>• Oil, acrylic, pastels, charcoal, pencil are all used for portraits</li> <li>• Charcoal is used for dramatic effect and contains less physical detail</li> <li>• Charcoal is used for planning sketches by many artists</li> </ul>
What are the proportions of the body?	<ul style="list-style-type: none"> <li>• Use the head as a measuring unit</li> <li>• Identify how many 'heads' a body measures in width and height</li> <li>• The number of heads changes with age</li> </ul>
What lines and tones can be created using graphite pencil, pastels and charcoal?	<ul style="list-style-type: none"> <li>• Lines of different thickness, light and tone can be made by varying pressure</li> <li>• Show 3D by using smudging, blending, stippling, hatching, contour hatching,</li> </ul>
What is a tonal scale in a photograph?	<ul style="list-style-type: none"> <li>• A tonal scale is the <b>graduation of greys from white to black or lightest to darkest using 9 values.</b></li> </ul>

How is charcoal used and what effects can be created?

Technique	Example
Cross-Hatching	
Blending	
Stippling	
Contour-Hatching	
Scumbling	

### Vocabulary

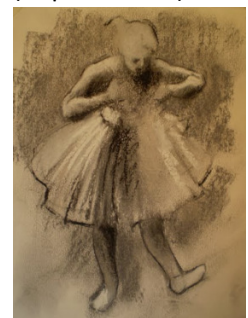
3-d	portraying something in three dimensions
blend	to mix enough so that there no longer seem to be separate parts
contour hatching	Rather than simple parallel lines, contour hatching is when the lines follow the contours of the subject. This method of hatching greatly enhances the sense of volume and three-dimensionality of anything you are drawing
cross hatch	to shade a drawing using many parallel and intersecting lines
graphite pencil	a soft black or gray form of carbon. It is the writing material in pencils
mannequin	a model of the human torso or body used to fit or display clothing or for drawing
proportion	the relationship in size of two things
scumbling	modify a drawing with light shading in pencil or charcoal to give a softer effect
smudge	cause something to become smeared by rubbing it
stippling	the creation of a pattern simulating varying degrees of solidity or shading by using small dots
tonal scale	the graduation of greys from white to black or lightest to darkest using 9 values

### Artist or Art Movement

Leonardo da Vinci  
(Renaissance)



Degas  
(Impressionist)

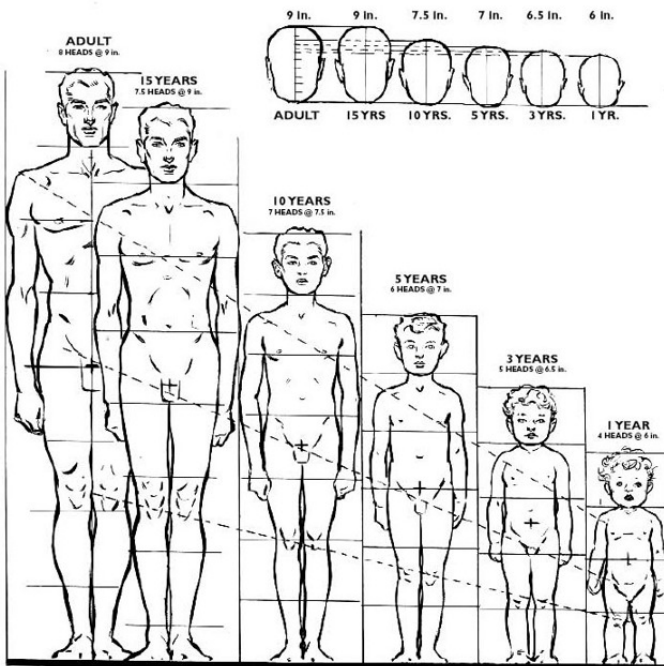


## Art Skills and Techniques

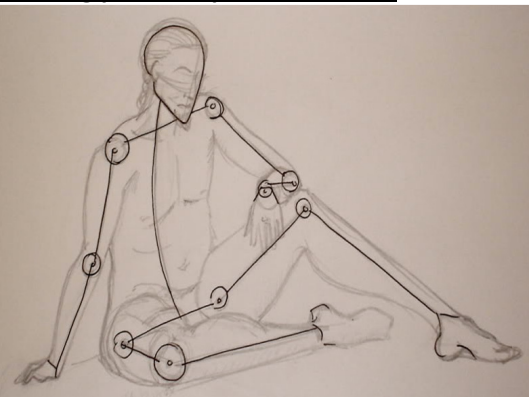
- Explore the qualities of charcoal sticks and graphite pencils /pastels to create different lines and tones.
- Identify the tonal scale in a photograph
- Smudge and blend charcoal lines
- Use charcoal and chalk to create light and shade and 3-D
- Know the proportions of the whole body.
- Sketch bodies in different positions

### Pictures

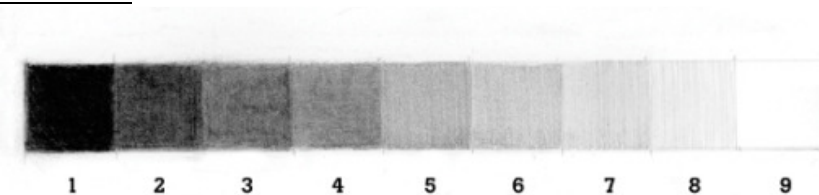
#### Using heads as proportion



#### Starting point for photo to sketch



#### Tonal scale



#### Clip showing techniques

<https://www.bbc.co.uk/bitesize/clips/z9mk2hv>