



Willerby Carr Lane Primary School

Carr Lane, Willerby, Hull, HU10 6JT
Telephone: 01482 653388
Email: admin@carrlaneprimary.net
Twitter: @WCLPS
Willerbycarrlaneprimary.org.uk

Newsletter

7th September, 2020

Willerby Carr Lane Primary School Newsletter



Welcome back to the start of school. It is with great joy that we are finally able to welcome all pupils back into school. May I thank you for your ongoing support, dedication and cooperation as we continue to work together through these most challenging times.

It has been an incredibly difficult 6 months for everyone: children, parents and staff. We did manage to accommodate over half our pupils in school during the summer term, which was a significant accomplishment under the circumstances. However, this still left us feeling concerned about the half of the school that we couldn't invite back. Despite our very well received Google Online Classrooms, children did struggle with the lockdown restrictions.

We now eagerly look forward to having all pupils back in school. We appreciate that many parents will be worried about the safety of their children. Keeping your children safe is always our number one priority: Safe → Happy → Learning. As we return, we aim to provide as normal an educational experience as possible whilst ensuring we keep everyone safe, working within a Covid Secure operation.

We will continue to do everything we can to keep school as safe as

possible. The health, safety and wellbeing of our staff and children is of paramount importance and we thank you for your continued support during these unprecedented times. I can assure you that the school are vigilant in following government and local authority guidance, including, but not limited to, a robust cleaning regime. Our full measures are set out in our published risk assessment.

Please help us to keep your child, yourself and our staff safe, by following our *Parents'/ Carers' Guide to the Full Re-opening of School* and our *Parents'/ Carers' Guide to Drop-off and Pick-up Routines*. Please be punctual, maintain social distancing and leave the site promptly.

To help you navigate your way to the new entrance and exits, we have also labelled each external doorway with a clear A4 yellow sign to confirm where your child is to enter school.

We are really looking forward to having all our pupils back at school. However, we have also been making contingency plans in case of any partial lockdown. If pupils do need to self-isolate for a period of time, we will provide them with teaching and learning which covers the same ground as those pupils at school delivered over our Google Classroom

platform.

Please remember, if you need to talk to us, you can either telephone or email the office or drop a letter in the post box outside the front door. All teachers will be using the Class Dojo app to help facilitate the passing of non-urgent messages. For everyone's safety, teachers are not available to talk at the classroom door at the beginning or end of the day. Absence and illness must be notified to the office as normal.

We all look forward to a time when Coronavirus is behind us. However, it is here and looks likely to remain for a long time yet. Despite school reopening to everyone, we will not be complacent where your child's and our staff's safety are concerned and we will continue to work in partnership with you to provide the very best education in a safe and secure manner.

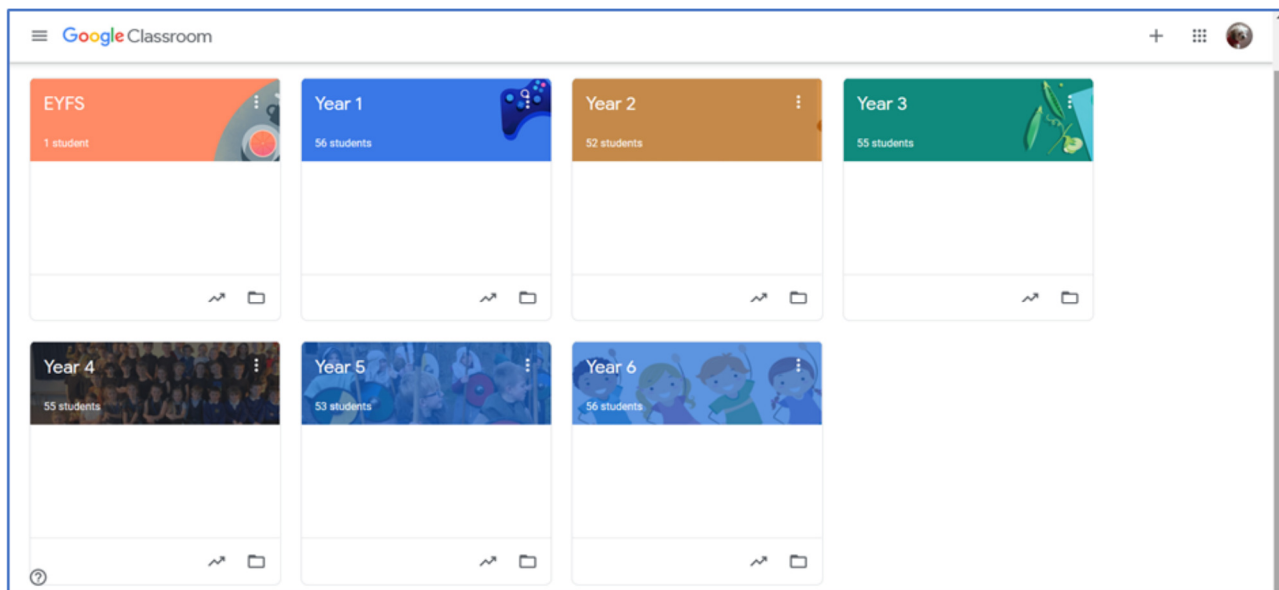
Thank you as always for your support.

Entrance Signage

Example of A4 signage to show which external door is to be used by which class.



Google Classrooms – Are You Ready?



Whilst we hope that school will be able to stay fully open, we have made contingency plans in case of partial lockdowns (if instructed by Public Health England) or for children who are instructed to self-isolate.

In the eventuality that a year group bubble is closed or children need to self-isolate, then we will immediately revert to our online Google Classroom teaching.

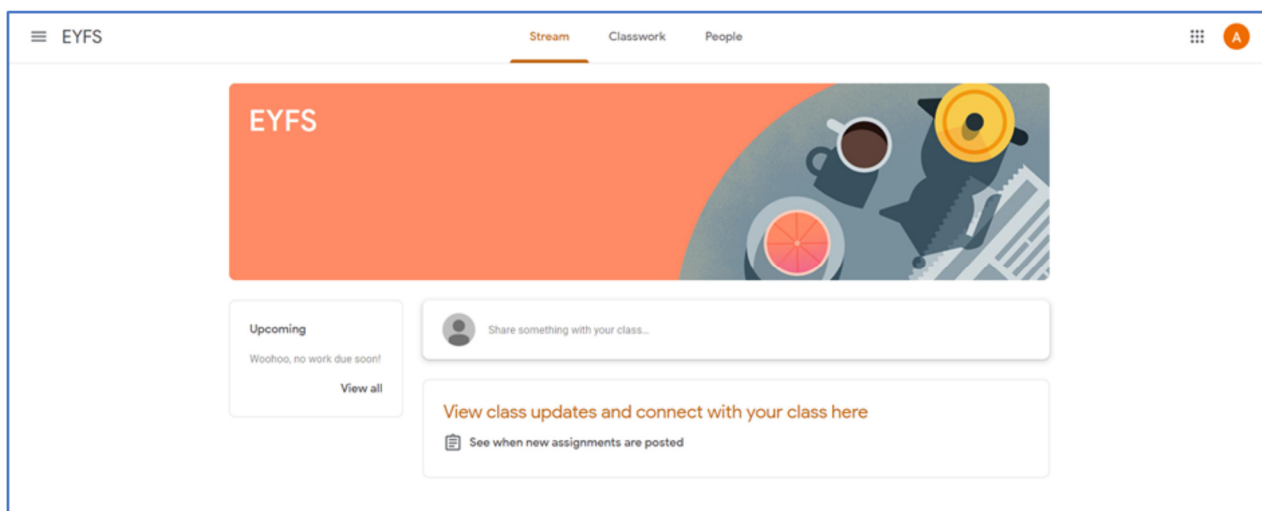
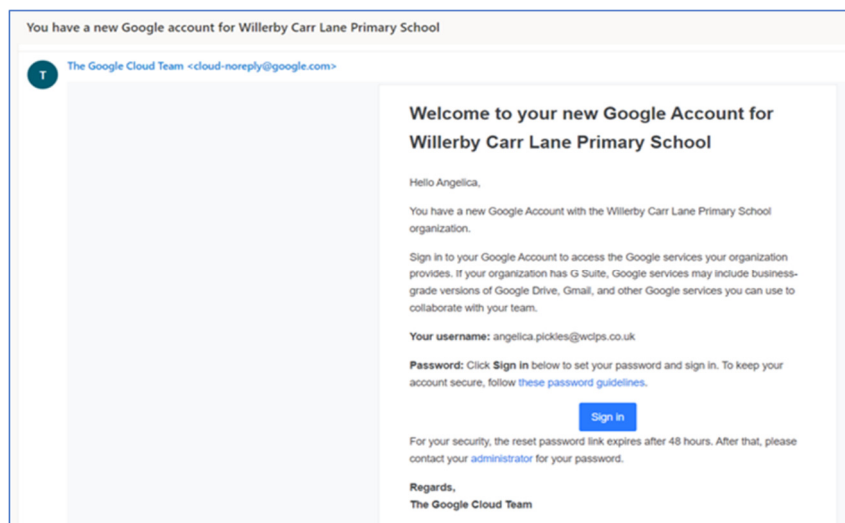
We have registered all our new EYFS pupils and other new pupils on Google Classroom and sent invitation emails to all parents, explaining how they can register and log in. All existing log-ins from last summer are still valid.

Please check you can access your Google Account. Please see our attached guide for how to log on to your Google Classroom.

It is important that everyone is prepared, has a working Google Classroom account for each child and is thereby ready to access remote education immediately if necessary.

We have also been looking at how

to improve our well-received online learning offer. As well as posting our normal lessons online, we will be utilising pre-recorded video lessons from Oak National Academy.



Key Message about how you can really help your child succeed

Reading is the gateway to all other subjects at both primary school, secondary school and beyond. And, just as importantly, reading for enjoyment is a gift for life.

Of course there are different aspects to developing reading skills including: letter recognition, sounding out, blending sounds, phonics, sight reading, scanning ahead, skimming for information, reading with expression, reading with fluency and reading with comprehension.

Support from home has a **massive** impact on a child's reading ability. This continues all the way through primary school from EYFS to Year 6. From the basics of reading sentences; to becoming fluent; to developing a much richer vocabulary (rather than just skipping over unknown words); through to actually being able to recount/ summarise/ understand what has been read and answer questions.

I can read! So, why should I read ?!!

It may seem like a silly question, but we often see children, boys especially (but not solely), who don't read much once they have mastered the basics of phonics and key words. Books take a back seat to tv, computers and other activities in a hectic, over-stimulating, multimedia world. Does this matter?

Unfortunately, many children fail to develop their reading skills once they have mastered the basics. They don't read for enjoyment. They don't get the reading habit. They read less, and so they read less fluently. They don't spend time listening to someone reading to them.

The outcome is what teachers see in class - too many children

with a limited vocabulary and limited comprehension skills. Children who struggle to just about pass reading tests or sometimes don't. Children who don't see reading as fun and only do it reluctantly.

Why is this important?

Kids who read often and widely get better at it.

Reading exercises our brains.

Reading improves concentration.

Reading teaches children about the world around them.

Reading improves a child's vocabulary, leads to more highly-developed language skills and improves the child's ability to write well.

Reading develops a child's imagination.

Reading helps kids develop empathy.

Because reading does all the things I've mentioned above, children who read do better at school. And they don't just do better at subjects like reading, English and history. They do better at all subjects and they do better all the way through school.

Reading relaxes the body and calms the mind.

International evidence shows that being able to read well at age 11 has direct consequences for children's futures: they are more likely to do well at secondary school, get more qualifications and find it easier to get a job and then promotions in the workplace.

And, it's a great form of entertainment !!!!

<https://theconversation.com/research-shows-the-importance-of-parents-reading-with-children-even-after-children-can-read-82756>

I'm pleased to say that Albert, our school reading dog, will also be popping in most weeks to listen to some individual readers!

Have you received a text from us in September ?



Most of our communications are either emailed or sent by text. It is far more reliable and much more efficient than trying to send letters home with pupils.

It is essential therefore that we have your up-to-date mobile phone numbers and email addresses. If you have not received a text from us so far this year, then please email or phone the office to check we have your up to date contact details.

We also make a lot of use of Twitter to share with you the amazing things that the children have been doing. It is a great way to celebrate and share the many wonderful achievements, funny moments, hard work and daily life of the school. Using twitter is really easy but if you want help, please ask.

And don't forget that not only can you see what has been happening, you can add your own comments and 'likes' too – nothing makes the children prouder. We have different Twitter accounts for each year group as well as one overall for the school.

Follow us at: **@WCLPS**, @WCLPSeyfs @WCLPSyear1, @WCLPSyear2 etc

Catchup

Many parents may be concerned that their child will have '*fallen behind*' and struggle when they come back. It is certainly the case that all pupils will have missed out on quality face-to-face teaching and will have engaged to varying degrees with the online learning.

At the beginning of this academic year, teachers will be picking up from where we left off at the start of lockdown. They will be assessing as they go, to inform them about key areas that need teaching and reinforcing. Whilst retaining a broad and balanced curriculum, there will be a sharper focus on core aspects of maths, reading and writing to help everyone feel confident and catch-up on areas missed. Teachers will continue to assess children's progress carefully and address any gaps in their knowledge and understanding with the support of teaching assistants across the school.

Summer Works

Summer holidays are always a busy time for the premises team. This year it has been even more so as the internal spaces have been re-adjusted to facilitate a Covid Secure operation when all our pupils return.

As well as the regular annual maintenance, we have changed drinking fountains so that they now have spouts for refilling water bottles instead of drinking from. We have also installed a new telephone system across the site which now means we have direct contact with all classrooms.

One of our biggest projects was the redesign of the old Art Block into our new 'Hub'. The Hub will provide a centre for intervention and support. It now has full Wi-Fi functionality and can accommodate up to 30 children.

Our Intervention team, headed by Mrs Turnbull, will work alongside our SEN team and teachers across the school, to provide carefully targeted support where it is needed.



The Hub - a new, dedicated space to support intervention and catch-up

What did you do at school today?

The usual answer from children is "nothing!" Hopefully, you won't be surprised to find out that this is not the case! To help you get an overview of what your children are learning each half term, we publish a curriculum overview for each year group on the **Curriculum / Termly**

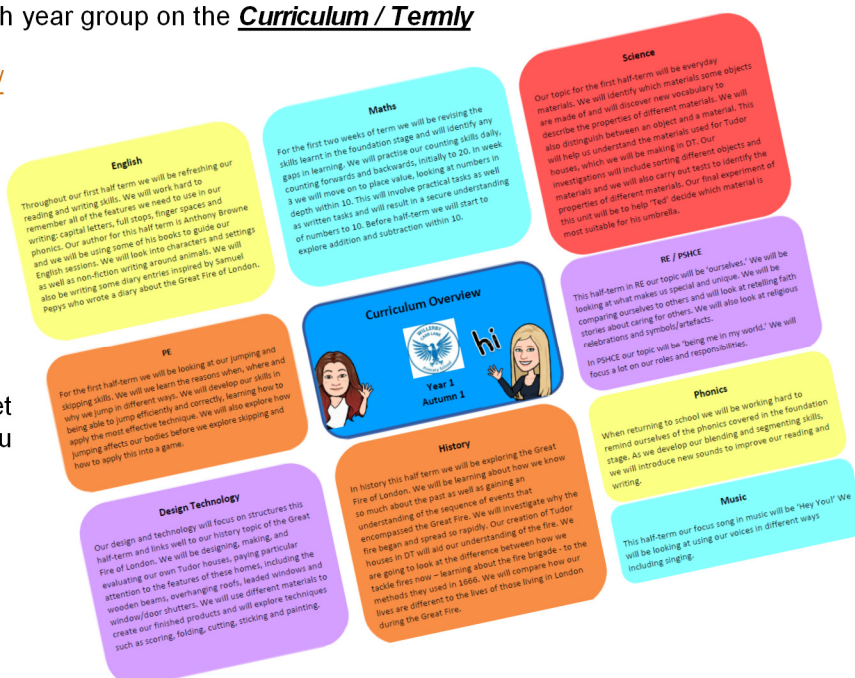
Planning pages of our website:

<https://willerbycarrlaneprimary.org.uk/>

We have also attached a copy to this newsletter. This will give you a broad overview of what they are learning.

(More detail of exactly what is covered can be found under the **Curriculum** tab of the website.)

Please have a look at the areas your child is covering. It might help you get a more accurate answer next time you talk to them about what they did at school today!



Healthy Packed Lunches

We believe it is important that the young children in our care eat healthily. In the science curriculum, pupils are made aware of the benefits of healthy eating and the risks of a poor diet. In health education lessons we learn how to keep both our bodies and minds healthy.

Our school meals are prepared following national guidance on nutrition and provide a balanced diet. When children bring in their own packed lunch from home, we also ask that it be healthy, nutritious and well-balanced.

We recommend that a balanced packed lunch should

contain:

- starchy food (e.g. bread, bagal, wrap, pitta or pasta)
- protein foods (e.g. meat, fish, eggs beans)
- a dairy item (e.g. cheese or yoghurt)
- vegetables or salad
- a portion of fruit
- a drink such as water or fruit juice



There should be no sweets or chocolate or fizzy drinks in school and, as I'm sure you'll understand, should they come into school, they will be confiscated and disposed of.

The lunch box may also contain ONE of the following for that extra energy boost:

- Small packet of crisps
- Sweet option – small piece of cake, biscuit or cookie.

Health & Safety notes

Any grapes must be cut in half to avoid presenting a choking hazard)

Products containing nuts must not be provided

Labelling uniform

We do our best to reunite school uniform with children but it is an impossible task when the uniform is unnamed. Please do a quick check of the labelling periodically through the year – it may be that what you write on in September gets washed off.

Just imagine, we have 424 children in school, so ... on any one day we have 848 sandshoes/ trainers + 424 cardigans or jumpers + 424 PE shorts + 848 outdoor shoes + 424 PE tops + 424 coats + 424 book bags + 200

sandwich bags. That's potentially a lot of uniform to keep track of. Please help us by checking your labelling regularly.



the holiday is seen as 'once in a lifetime' and so on.

The potential for fines remain based on accumulated unauthorised absence. Fines are levied by the LA and monies are kept by the LA. Any fines incurred apply to each parent and for each child.

If you still intend to take an absence during term time, please inform the office.

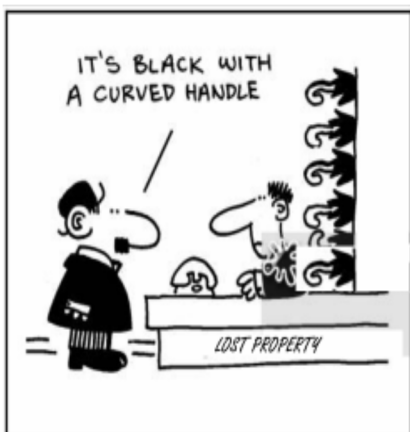
In addition, please don't ask the children to keep a secret or pretend they have been ill. They just can't resist telling someone, usually the teacher, where they have really been. which can cause embarrassment for all.

Holidays in Term Time

The Local Authority Policy on Term Time Holidays adopted by the school Governing Body is very black and white.

It is not possible to authorise absences during term time for a holiday.

This policy applies even where: parents have employment constraints; children have 100% attendance to date; children are doing very well academically; or



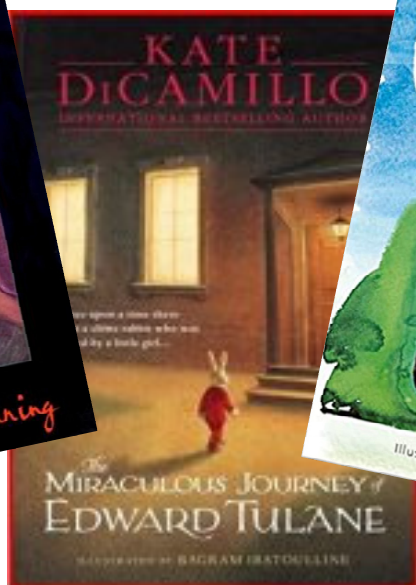
Reading—Phonics, Fluency, Comprehension and Reading for Pleasure

At Willerby Carr Lane, we believe that the ability to read is fundamental to pupils' development as independent learners, during their time at school and beyond. Success in reading has a direct effect upon progress in all areas of the curriculum; therefore reading is given a high priority at our school.

Evidence of our success with reading over the years can be seen in the results and achievements of our children. Our phonics scores are ahead of national outcomes and by the time our children leave us at the end of Year 6 they continue to attain very highly. Nonetheless, there is still room for improvement in developing children's reading fluency and reading comprehension. In September we will be putting increased emphasis on reading throughout the school to help fill the gaps that will have occurred during the 6 months of lockdown. We aim to rebuild children's confidence and skills and, most importantly, we would like to support children in developing positive attitudes to reading which will encourage them towards life-long reading.

In the Infants, from EYFS to Year 2, there will be an increased emphasis on phonics when we return. We will be involving more staff to teach phonics, in smaller, carefully targetted groups and we will be allocating more time during the week to catch-up. After Christmas, Year 2 will start to shift focus from phonics to Reading Mastery.

In years 3-6 we will be putting increased emphasis on our whole class Reading Mastery sessions to develop fluency and comprehension skills. In our whole class Reading Mastery lessons, there is a high level of interaction between teachers and pupils. Children are exposed to high-quality texts and discussion in an immersive environment. Teachers carefully choose texts to provide appropriate challenge that builds on pupils' existing knowledge and understanding. During the daily sessions, each year group studies an age appropriate book that will stimulate enjoyment for reading, expand the children's vocabulary, improve fluency and extend their comprehension skills. In order to have the most impact, each child will need to have their own copy of the book. This will allow them to read at their own pace, create notes within the text, as well as, complete follow-on work at home. Having their own personal copy to annotate will give them a much greater ownership and personal investment in their learning.



Personal Copy Books for Annotation

As you can imagine, within these financially challenging times, the cost to purchase a book for every child would be difficult for the school to fund. Therefore, we need your help to ensure the approach works by buying your child a copy of the book that they can cherish and expand their passion for reading.

The school will only be able to purchase a very limited number of texts (including audio versions) therefore it would be a great help if you are able to purchase a copy of the below mentioned book for your child to use. New or used copies of the books can be purchased on many websites such as:

Abebooks UK	https://www.abebooks.co.uk/?cm_sp=TopNav-_-Results-_-Logo
Amazon UK	https://www.amazon.co.uk/
Ebay UK	https://www.ebay.co.uk/
Biblio	https://biblio.co.uk/
Waterstones	https://www.waterstones.com/

This model has been used extensively across the East Riding and proven to be highly effective. We are always amazed and grateful for all the encouragement you give your children and our school community and once again would like to thank you in advance for your support with our commitment to reading for pleasure.

Details of your child's class book:

Year Group	Book Title	Author	ISBN
3	A Series of Unfortunate Events: The Bad Beginning	Lemony Snicket	9780749748814
4	The Miraculous Journey of Edward Tulane	Kate DiCamillo	9781406360660
5	Coming to England	Floella Benjamin	9781509835492
6	Street Child	Berlie Doherty	9780007311255

We would ask that your child purchases the book during the summer holidays, but does not read it in advance.

Car Parking Hazards – Let's Look Out For Each Other

Please **DO NOT** drive down the last cul-de-sac part of Bellfield Drive.

As you can see from the photograph, the road is very narrow and usually has some cars from residents parked up. When cars squeeze down the road, they often mount the kerb. This is very dangerous for our pupils who are on the pavements.



Want to see more of what goes on at WCLPS?

Then find and follow us on the internet:

School Website: packed with information:

<https://willerbycarrlaneprimary.org.uk/>

Or follow us on **Twitter:**

@WCLPS @WCLPSEYFS
@WCLPSYear1 @WCLPSYear 2
etc.



Or, look at our photo albums on **flickr**. Go to

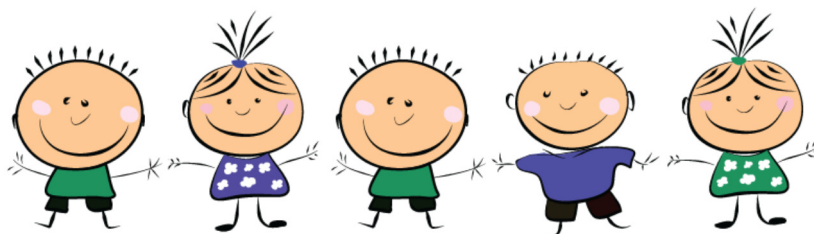
<https://www.flickr.com> and search for WCLPS, or go direct to:

<https://www.flickr.com/photos/165477203@N02/>

Or, watch our videos on **Vimeo**.

Go to <https://vimeo.com/> and search for WCLPS, or go direct to:

<https://vimeo.com/manage/showcases/5676289>



With best wishes
from Mr Smith & the
whole staff team.

