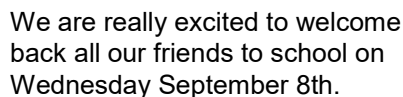




**Carr Lane, Willerby, Hull, HU10 6JT**  
**Telephone: 01482 653388**  
 Email: [admin@carrlaneprimary.net](mailto:admin@carrlaneprimary.net)  
 Twitter: [@WCLPS](https://twitter.com/WCLPS)  
[Willerbycarrlaneprimary.org.uk](http://Willerbycarrlaneprimary.org.uk)

**2nd September, 2021**

**Willerby Carr Lane Primary School Newsletter**



For the first time in 18 months we will be operating very much as a normal school. There will be no bubbles and no staggered entry/exit times and no staggered playtimes.

We look forward to school life very much getting back to normal, with:

- a regular school day from 8.50am to 3.30pm for everyone
- daily Key Stage school assemblies
- Friday award assemblies
- weekly singing practice
- regular hot lunches in the school hall
- playtimes where children can all play out at the same time
- lunchtime and after-school clubs
- trips out to museums, galleries and local community establishments to enrich our curriculum teaching
- the full curriculum including cooking in DT and singing in

- expert visitors in school to share their knowledge with our pupils
- community events such as Harvest Festival and Remembrance
- PFA events throughout the year
- shows and performances that parents can see in person

For many of us, we have forgotten what a normal school day looks like. For parents of Year 1 children, they will only have known school as a Covid-operation. Indeed, for our teachers who were new to the school last year, they too have only known a Covid-operation!

We now eagerly look forward to having all pupils back in school. We genuinely can't wait to bring back so much of what enriches the experience of our pupils' school life.

We appreciate that many parents will be worried about the safety of their children and the possible onward transmission of covid to wider members of their family and the community.

Keeping your children safe is always our number one priority: Safe -> Happy -> Learning. We will continue to do everything we can to keep school as safe as possible. The health, safety and wellbeing of our staff, children and community is of paramount importance and we thank you for your continued support during these unprecedented times. I can assure you that the school will continue to be vigilant in following government, Local Authority and Public Health England guidance including, but not limited to:

- ensuring enhanced ventilation
- hand hygiene routines
- respiratory hygiene routines
- 10 minute window for drop-off at the start of the day
- entry/ exit via multiple classroom doors
- higher levels of cleaning

May I thank you for your ongoing support, dedication and cooperation as we continue to work together through the challenges ahead.

## **We need your help to keep our school and community Covid-safe and to avoid unnecessary disruption to our education**

The rates of positive COVID-19 test results in Hull and the East Riding are currently higher than the national average. As schools return and social mixing in the community continues, it is possible that we will see higher rates of infection. We all need to act diligently if we are to avoid unnecessary disruption to everyone's education this year.

### **Children or parents who have symptoms of coronavirus must not come to school**

#### **The main symptoms of coronavirus (COVID-19)**

- **a high temperature** – this means you feel hot to touch on your chest or back (you do not need to measure your temperature)
- **a new, continuous cough** – this means coughing a lot for more than an hour, or 3 or more coughing episodes in 24 hours (if you usually have a cough, it may be worse than usual)
- **a loss or change to your sense of smell or taste** – this means you've noticed you cannot smell or taste anything, or things smell or taste different to normal

#### **What to do if you have symptoms**

If you have any of the main symptoms of COVID-19, **even if they're mild**:

1. Get a PCR test (test that is sent to a lab) to check if you have COVID-19 as soon as possible.
2. Stay at home and do not have visitors (self-isolate) until you get your test result – only leave your home to have a test. Check if people you live with need to self-isolate.

**Please do not put yourself or others at risk.  
If you have symptoms, however mild, stay away and  
get tested.**

**Avoid putting other children or staff at risk.  
It takes just 1 day to get test results and to be sure.**

**<https://www.gov.uk/get-coronavirus-test>**

## Stop the Spread of Covid-19

Please help us to keep disruptions to our school operations to a minimum this year.

- Make sure your child is dressed warmly - the classes will have increased ventilation
- Please arrive on site punctually (not before 8.40am) and leave promptly
- Please keep your social distance from school staff
- Please do not congregate around doorways
- Parents **must not enter the school building**
- Letters and items for the office should be dropped off in the collector provided
- Please communicate with the office by phone or email
- You can communicate with teachers via the 'class dojo' app (please do not communicate urgent messages to teachers, such as children's absence)
- If you, or your child have symptoms of covid, then you must stay at home and arrange for a PCR test

By working together we aim to make this school year as normal as possible.

## Google Classrooms – Are You Ready?

Whilst we hope that school will now be able to stay fully open, it is likely that individual children may have to self-isolate. It is also possible that there may be a wider outbreak of Covid at school. If that happens, we will liaise with Public Health England and take appropriate measures following their advice—this might include a wider group of children being required to self-isolate. We will keep you fully informed of any such event.

In the eventuality that children need to self-isolate, then we will immediately revert to our online Google Classroom teaching.

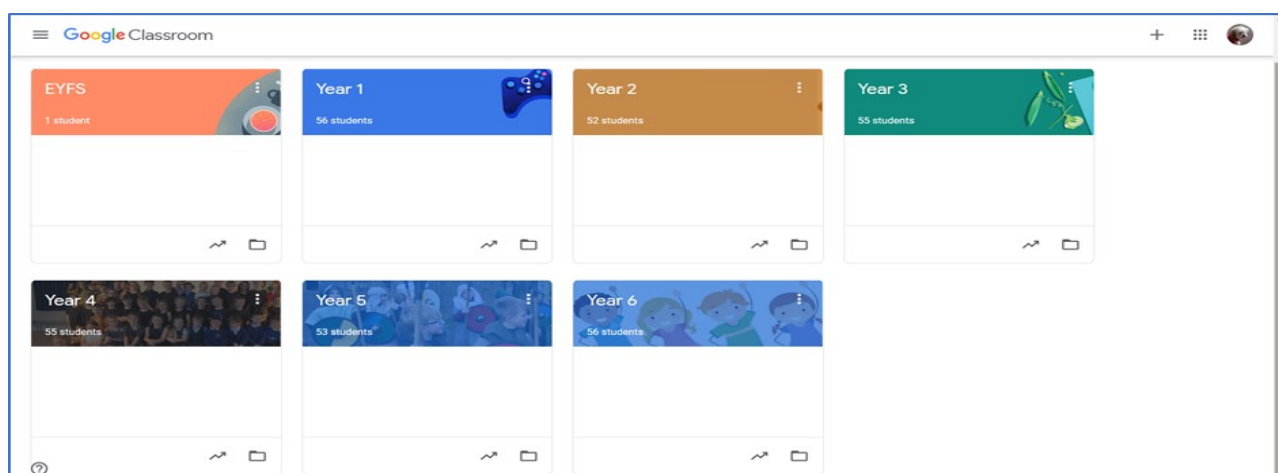
We will register all our new EYFS pupils and other new pupils on Google Classroom and send invitation emails to all parents, explaining how they can register and log-in next week.

All existing log-ins from last summer for all other pupils are still

valid. Please check you can access your Google Account.

It is important that everyone is prepared, has a working Google Classroom account for each child and is thereby ready to access remote education immediately if necessary.

Are you ready?







Did the dinosaurs exist at the same time as stone age people?

If you think they did, then you have been learning too much from watching the Flintstones ("Yabadabadoo!") and not enough from studying your timelines!!

(FYI—dinosaurs were roaming around 66 million years ago; Fred, Wilma, Barney and friends were peddling their cars around 5000 years ago! A slight difference in time).

During the Summer holidays we commissioned a very talented artist to paint a History timeline in the corridor near to our main hall. The results are truly inspiring and set to fire our children's imagination. Understanding chronology is vital in developing a secure historical understanding of how events relate to each other and how life changes over time. Our new timeline will help children understand where their current history focus fits with other topics.



A central expectation of the National Curriculum is that children in Key Stage 1 learn to name and locate the world's seven continents and five oceans as well as the four countries and capital cities of the United Kingdom. In Key Stage 2, children learn to locate the world's countries, using maps to focus on Europe (including the location of Russia) and North and South America. They learn to name and locate key counties and cities of the United Kingdom. They also learn to identify the position and significance of latitude, longitude, Equator, Northern Hemisphere, Southern Hemisphere, the Tropics of Cancer and Capricorn, Arctic and Antarctic Circle, the Prime/Greenwich Meridian and time zones (including day and night).



## Early Years Foundation Stage Outdoor Area

It's been a busy summer holiday down in the EYFS. We now have an exciting new climbing frame, a fabulous new play house and a super new mud kitchen. These will provide lots of opportunities to support the children's social, physical, creative and imaginative development as well as their language, maths and design technology skills—all whilst having a great, fun time !!



### Willerby Carr Lane Primary School

A welcome message from our  
**Early Years Foundation Stage Team**



<https://vimeo.com/594584462>

## Key Message about how you can really help your child succeed

**Reading is the gateway to all other subjects at both primary school, secondary school and beyond.** And, just as importantly, reading for enjoyment is a gift for life.

Of course there are different aspects to developing reading skills including: letter recognition, sounding out, blending sounds, phonics, sight reading, scanning ahead, skimming for information, reading with expression, reading with fluency and reading with comprehension.

Support from home has a **massive** impact on a child's reading ability. This continues all the way through primary school from EYFS to Year 6. From the basics of reading sentences; to becoming fluent; to developing a much richer vocabulary (rather than just skipping over unknown words); through to actually being able to recount/ summarise/ understand what has been read and answer questions.

**I can read! So, why should I read ?!!**

It may seem like a silly question, but we often see children, boys especially (but not solely), who don't read much once they have mastered the basics of phonics and key words. Books take a back seat to tv, computers and other activities in a hectic, over-stimulating, multimedia world. Does this matter?

Unfortunately, many children fail to develop their reading skills once they have mastered the basics. They don't read for enjoyment. They don't get the reading habit. They read less, and so they read less fluently. They don't spend time listening to someone reading to them.

The outcome is what teachers see in class - too many children

with a limited vocabulary and limited comprehension skills. Children who struggle to just about pass reading tests or sometimes don't. Children who don't see reading as fun and only do it reluctantly.

Why is this important?

*Kids who read often and widely get better at it.*

*Reading exercises our brains.*

*Reading improves concentration.*

*Reading teaches children about the world around them.*

*Reading improves a child's vocabulary, leads to more highly-developed language skills and improves the child's ability to write well.*

*Reading develops a child's imagination.*

*Reading helps kids develop empathy.*

*Because reading does all the things I've mentioned above, children who read do better at school. And they don't just do better at subjects like reading, English and history. They do better at all subjects and they do better all the way through school.*

*Reading relaxes the body and calms the mind.*

**International evidence shows that being able to read well at age 11 has direct consequences for children's futures**: they are more likely to do well at secondary school, get more qualifications and find it easier to get a job and then promotions in the workplace.

And, it's a great form of entertainment !!!!

And, it's a great form of entertainment !!!!

<https://theconversation.com/research-shows-the-importance-of-parents-reading-with-children-even-after-children-can-read-82756>

I'm pleased to say that Albert, our school reading dog, will also be popping in most weeks to listen to some individual readers!

## Have you received a text from us in September ?



Most of our communications are either emailed or sent by text. It is far more reliable and much more efficient than trying to send letters home with pupils.

**It is essential therefore that we have your up-to-date mobile phone numbers and email addresses.** If you have not received a text from us so far this year, then please email or phone the office to check we have your up to date contact details.

We also make a lot of use of Twitter to share with you the amazing things that the children have been doing. It is a great way to celebrate and share the many wonderful achievements, funny moments, hard work and daily life of the school. Using twitter is really easy but if you want help, please ask.

And don't forget that not only can you see what has been happening, you can add your own comments and 'likes' too – nothing makes the children prouder. We have different Twitter accounts for each year group as well as one overall for the school.

Follow us at: **@WCLPS**, @WCLPSeyfs @WCLPSyear1, @WCLPSyear2 etc



## SAFETY FIRST

It is our paramount duty to ensure that children are kept safe at school. As we always say: "Safe – Happy – Learning". To this end may I express my sincere thanks for the full cooperation and understanding shown for the school's security arrangements. As always you have been amazing. THANK YOU. The following is a reminder of some key procedures:

External school doors are shut and locked promptly after admitting children at 8.50am. Children have 10 minutes to enter school—between 8.40 and 8.50am. After 8.50am, staff are under strict instructions to lock classroom doors and NOT to let children enter. Late arrivals, even by a few minutes, will need to enter the school via the front entrance.

Children must not arrive unaccompanied on the school premises prior to 8.40am. We do not have any staff on duty to look after children in the morning prior to this. If you need to drop your child off earlier you will need to make use of our Breakfast club or make alternative arrangements.

Children going home for lunch must return at 1.10pm prompt but not before. This is to ensure that we know which children are on site at all times in case of emergency.

**The school car park gates are LOCKED BETWEEN 8.30am and 5.00pm.** The school car park must not be used for dropping off or picking up children between these times.

We have many staff and deliveries arriving, leaving and manoeuvring in tight spaces at different times of day. It presents a major danger and hazard. The gates are therefore locked and staff have been instructed not to open them.

Parents picking up from a club at 4.30pm must not use the car park. It may seem safe for a single parent to do so, but we often have between 30 and 60 children at after school clubs on any one evening. If parents were allowed to use the car park to pick them up, then we would be bound to have a serious accident sooner or later. The only exceptions to this are:

- Parents who have been granted a school disabled parking permit for the current academic year.

- Parents dropping off for Breakfast club **prior to 8.30am**
- Parents picking up from a club or our Out of School Club, **after 5.00pm**
- Parents picking up/dropping off a child for a medical appointment during the school day between 9.30am and 3.00pm

In all such cases, the parent must accompany their child through the car park.

Thank you all in advance for your understanding. Parent/Carers can be confident of the absolute safety of their children whilst at school and if any Parent/Carer spots a weakness in our procedures, I would be grateful if you will please let us know.

## Cycling and Scooting to school

Children in Year 6 are allowed to cycle to school unaccompanied as long as they are wearing a cycle helmet. Other pupils may cycle if accompanied by their parents.

We also welcome children scooting to school – a fun and healthy way to arrive – and we provide lots of scooter racks.

For everyone's safety, children are not allowed to scoot or ride on the playground in the morning or after school – the playgrounds are too congested with little children and adults.

*(Football is also encouraged during the day, but again for everyone's safety, not before school.)*



## Year group Welcome Meetings

Each year group will be holding an online welcome meeting for parents from the week beginning 20 September—the actual dates for each year group and the Zoom meeting joining codes will be sent out next week. The meetings will be from 6pm to 7pm.

*(Please note that this does not include Year 1 who already held their welcome meeting at the end of last Summer Term)*

Your attendance would be very valuable. It is a great opportunity to meet your child's new class teacher and to find out about the key learning goals and routines for the year group and ask any questions you may have.

We will also be explaining the expected standards in **Maths and English** in your child's year group and how you can help.





## School Meals

We are delighted to announce that children will be returning to eating their lunches in the Halls rather than their classrooms from September. The Autumn menu has been emailed to parents and is also available on the school website.

We are offering a varied hot lunch, jacket potato or sandwich meal choice with salad, dessert and fruit. We are also excited to include an all-day breakfast as a brand new option within the Autumn menu.

Please note that for any pre-packaged foods, such as sandwiches, salad pots or cakes that are provided off-site, for example trips or children eligible for benefits-related free school meals and who are remote learning due to Public Health guidance, all ingredients and allergens will be provided on the school's website.

The school also request that due

to some children's severe allergens, nuts are not provided in home packed lunches/products and to be mindful to cut fruit especially grapes lengthways. If your child has dietary or allergen requirements, please contact the office.

Healthy school food has obvious benefits and can help pupils establish healthy habits for life. Healthy school food can also help to improve pupil's readiness to learn.

## Ideas for Packed Lunches

Pitta Bread and Hummus, Cheese Quesadilla,, Deli Meat and Cheeses, Boiled eggs, Pasta Salad, Vegetable sticks, veggie wraps, Fruit snacks, granola bars. Please see the NHS website, Change4life for healthier lunchbox recipes, ideas and swaps.

## Free School Meals

EYFS, Year 1 & 2 children's school meals are free under the Government's Universal Free School Meal scheme, regardless of whether you are entitled to benefits-related free school meals.

Once your child starts Year 3, meals are to be paid for in advance using SIMS Pay (renamed Pay 360), if you have not used this for a while contact the office asking for a Pay 360 invitation code, school meals are £2.25 per day to be made payable in advance.

If you think your child is eligible for benefit-related Free School Meals or if you are unsure, please contact Mrs Clipson in the office – please note it is completely confidential. Every child eligible for benefits-related free school meals benefits both you and the school as we received Pupil Premium funding for your child; we pass this on to you through Free of Charge visits worth up to £38 per year and various other school support.

## Healthy Packed Lunches

We believe it is important that the young children in our care eat healthily. In the science curriculum, pupils are made aware of the benefits of healthy eating and the risks of a poor diet. In health education lessons we learn how to keep both our bodies and minds healthy.

Our school meals are prepared following national guidance on nutrition and provide a balanced diet. When children bring in their own packed lunch from home, we also ask that it be healthy, nutritious and well-balanced.

We recommend that a balanced packed lunch should

contain:

- starchy food (e.g. bread, bagel, wrap, pitta or pasta)
- protein foods (e.g. meat, fish, eggs beans)
- a dairy item (e.g. cheese or yoghurt)
- vegetables or salad
- a portion of fruit
- a drink such as water or fruit juice

**The lunch box may also contain ONE of the following** for that extra energy boost:

- Small packet of crisps
- Sweet option – small piece of cake, biscuit or cookie.



There should be no sweets or chocolate or fizzy drinks in school and, as I'm sure you'll understand, should they come into school, they will be confiscated and disposed of.

### **Health & Safety notes**

***Any grapes must be cut in half to avoid presenting a choking hazard)***

***Products containing nuts must not be provided due to allergies within school***

## Our School Governing Body

School governors make a valuable contribution to children's education, opportunities and futures. We firmly believe that our Governing Body should be drawn from our local community wherever that is possible. Consequently, they have strong personal links to the school and are invested in our continual improvement. As noted in our previous OFSTED inspection, we are fortunate to have a talented and hard working team of Governors who help to lead the school.

The governing board provides strategic leadership and accountability. It has three key functions:

- Overseeing the financial performance of the school and making sure its money is well spent
- Holding the headteacher to account for the educational performance of the school and its pupils
- Ensuring clarity of vision, ethos and strategic direction

Governors set the aims and objectives for the school and set the policies and targets for achieving those aims and objectives. They monitor and evaluate the progress the school is making and act as a source of challenge and support to the headteacher.



### **Tim Allan**

Tim works in educational research and evaluation. Much of his work focuses on improving outcomes for children that are disadvantaged. Originally from Driffield, he has lived in Willerby since 2007 and has twin boys at Willerby Carr Lane Primary School. Outside of work, he still has a forlorn hope of making it in the music business.

### **Su Bolton-Ali**

Su has been the deputy at Willerby Carr Lane since 2002. She has two grown up children and a chihuahua. She is the curriculum leader and currently teaches a year 2 class. Her passion is reading. Her ambition is for every pupil at our school to develop a love of reading; to enjoy listening to and sharing stories and reading books for themselves.

### **Kerry Boughen**

Kerry Boughen is a parent governor who works within the safeguarding children arena and is a registered nurse. She has 2 sons, one who happily attends Willerby Carr Lane Primary School. Kerry has a keen interest in promoting the safety and well-being of children and young people and enjoys supporting the school in achieving this.

## Daniel Britton

Daniel Britton has been a governor for 8 years, initially as a parent but has since carried on the role as a co-opted governor. He works as a Teaching Assistant at a local primary school and with a background in IT, enjoys helping to develop the computing curriculum and find ways to enhance teaching and learning through technology.

## Debbie Carmichael

Debbie has been a teacher at Carr Lane since 1995 and has taught throughout Key Stage 1. She has a daughter currently doing A levels at Wolfreton who was also a former pupil at Carr Lane. Debbie leads Art and Design and is also the deputy Maths Mastery Co-ordinator. She strongly believes that all children should be treated as individuals and endeavours to bring out the best in each and every one of them.

## James Clark

Mr Clark has been a Co-opted Governor since 2016 and has two young boys who both attend WCLPS. He has been a secondary school teacher since 2001 and is currently a middle leader at Kelvin Hall School in Hull. In his spare time he coaches the under 7 Westella and Willerby Wolves football team.

## Matthew Cooper

Matthew is a fully qualified accountant and is employed as Head of Finance for The Consortium Academy Trust. Previous to this role he was Head of Finance for Medicine at Hull and East Yorkshire Hospitals NHS Trust and before this role he worked for 10 years at Hull University within their Finance department. He has two children who attend Willerby Carr Lane Primary and their development and happiness is of paramount importance; with this in mind Matthew is very proud to support the school and its students, staff and facilities in the role of governor.

## Rebecca D'Arcy

Mrs D'Arcy has been a Co opted Governor since July 2017. She has 2 daughters both at WCLPS, so a vested interest in the school from a personal perspective. Mrs D'Arcy's professional life is in PE and School Sport across East Riding and therefore has the role of PE and Sports Premium Governor for the school.

## Ron Dickinson

Ron Dickinson has been a governor at the school for over 20 years, many of them as chair. Both of his children attended Carr Lane, although when they came it was actually separate infant and junior schools. His wife also worked at the school until last year. He used to own a large plumbing and heating company.

## Emma Hoe

Emma is our newest Governor; she was elected by parental vote in July 2021. Emma has a child entering Year 1. She works as an Inclusion Coordinator for national charity Kids, working to support families of children with SEND who are unable to access education or are at risk of permanent exclusion. Prior to this she worked as a SENDIASS practitioner, also for Kids. She is passionate about education and in ensuring children have access to the education they're entitled to.

## Jane Partis

Jane Partis was voted as a Parent Governor in April 2018. She is medically retired and was a Senior Biomedical Scientist in the Cytology laboratory based at Hull Royal Infirmary. She has 4 children. An older son who is currently in the Royal Marines, an older step-daughter who is a journalist and two younger children who are pupils at Willerby Carr Lane Primary School. Both have special educational needs. She also has two cats!! She believes that all children should have the right environment to thrive at their own pace and that schools should be able to work with parents to ensure a child reaches their maximum potential.

## Sean Smith

Mr Smith has been Headteacher of the school since 2008. He has 2 grown up daughters (who previously attended the school) and a Cavachon dog, Albert, who comes in to school as our emotional therapy dog. Mr Smith sees his main role as being to provide clear strategic and organisational leadership and to build a strong and supportive whole school team utilising the strengths and talents of all staff. He passionately believes that children should be happy and confident if they are to thrive.



## Annual Parental Survey

At the end of the Summer Term we conducted a parental survey to see how we are performing and look at any areas to improve. The survey was sent out to parents and carers of all children, from EYFS to Year 6.

### Survey Questions

This year, rather than asking parents to score the school on different areas, we simply asked parents to provide their comments on their child's experience of education over the past year. We wanted to encourage a higher response rate by keeping it simple. We also wanted to gain a more qualitative understanding of your views and not constrain any feedback.

### Response Rate

There was a total of 168 responses to the survey. This is equivalent to a 40% return rate. This is an extremely high response rate—our school surveys typically only receive a 25% response rate. It is also far higher than the response rate to commercial surveys.

### Survey Results

The feedback received was entirely praiseworthy of the quality of education provided. There were a few which raised very specific issues for us to consider. A small but typical sample of responses follow:

*Absolutely fantastic, all the staff are amazing and xxxxx has been really happy and enjoyed school this year. Couldn't see how it could be better*

*Happy so far this year! Lovely teachers! Thanks for all the help from the teachers and school in this pandemic! :)*

*Excellent and not affected by the challenging circumstances. Teachers have been fantastic and will be missed!*

*This year has been difficult for every child in the school. I feel the school has overcome these difficulties and given my child the education that he needs. They have managed to ensure that if they are isolating the work has been achievable for them to do at home and be available to the children if they require help. They have managed to keep the children having fun but at the same time keeping them safe.*

*It's hard to know where to start. Such a difficult & different year for all. What should of been an amazing last year started well & then hit by the pandemic. I cannot praise the staff enough for what you put into place to ensure online learning went ahead & my daughter came into school due to key worker parent. She has developed educationally despite all the challenges.*

*Brilliant, couldn't have asked for anything more from all staff concerned, they really have given their all in helping xxxxxx progress and catch up from the last 18 months, he's engaged into school life and actually given us feedback about what he has learnt at school, this hasn't really happened before! Massive thanks to everyone at school.*

*xxxxxxx has absolutely loved this year at school. The way the school has supported the children to adapt and kept parents informed in such a difficult time has been brilliant. We have never felt out of the loop with what is happening.*

*Fantastic !! I can't tell you how much I appreciate the hard work you've put in to keep the children safe and educated well this year .*

### Analysis

We are very pleased with the strong endorsements and high regard the school is held in. Children are happy to come to school and parents value the quality of education provided. This is in line with our own self-evaluation and reflects our vision statement "Happy Learners, High Aspirations". We recruit and build the very best staff team that we can and are proud of our skilled and dedicated workforce. However, we are not complacent about our strengths and are continually listening and evaluating to see how we can do better.

*Thank you for your support in helping us to make Willerby Carr Lane the lovely school it is – a school we would want to send our own children to.*

I have a **GROWTH MINDSET.**

I am in charge of how smart I am because

I can **GROW** my **BRAIN**

like a muscle by learning hard things.

I can achieve

**ANYTHING**

with **EFFORT** and

**RIGHT STRATEGIES.**

And even if I fail or make a mistake,

it is a **GREAT** thing, because

I can **LEARN** from them and

**I GET BETTER!**

Big Life Journal

[www.biglifejournal.com](http://www.biglifejournal.com)

## Labelling uniform

We do our best to reunite school uniform with children but it is an impossible task when the uniform is unnamed. Please do a quick check of the labelling periodically through the year – it may be that what you write on in September gets washed off.

Just imagine, we have 424 children in school, so ... on any one day we have 848 sandshoes/trainers + 424 cardigans or jumpers + 424 PE shorts + 848 outdoor shoes + 424 PE tops + 424 coats + 424 book bags + 200

sandwich bags. That's potentially a lot of uniform to keep track of. Please help us by checking your labelling regularly.



the holiday is seen as 'once in a lifetime' and so on.

The potential for fines remain based on accumulated unauthorised absence. Fines are levied by the LA and monies are kept by the LA. Any fines incurred apply to each parent and for each child.

If you still intend to take an absence during term time, please inform the office.

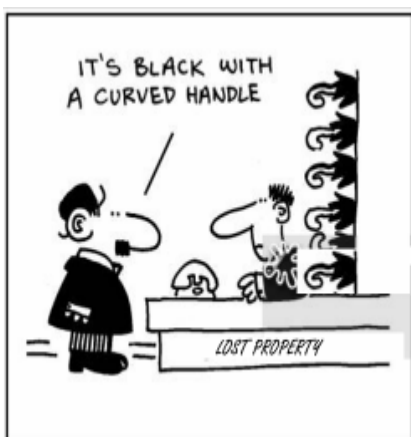
In addition, please don't ask the children to keep a secret or pretend they have been ill. They just can't resist telling someone, usually the teacher, where they have really been. which can cause embarrassment for all.

## Holidays in Term Time

The Local Authority Policy on Term Time Holidays adopted by the school Governing Body is very black and white.

It is not possible to authorise absences during term time for a holiday.

This policy applies even where: parents have employment constraints; children have 100% attendance to date; children are doing very well academically; or



## Car Parking Hazards – Let's Look Out For Our Little Friends

We respectfully request that you please park away from the school.

And please **DO NOT** drive down the cul-de-sac part of Bellfield Drive.

It's far too narrow and congested and so endangers children.

It might get you 30 seconds closer to school but it should play on your conscience and it's also going to annoy so many other parents that it's really not worth it.



Want to see more of what goes on at WCLPS?

Then find and follow us on the internet:

**School Website:** packed with information:

<https://willerbycarrlaneprimary.org.uk/>

Or follow us on **Twitter:**

@WCLPS @WCLPSEYFS  
@WCLPSYear1 @WCLPSYear 2  
etc.



Or, look at our photo albums on **flickr**. Go to

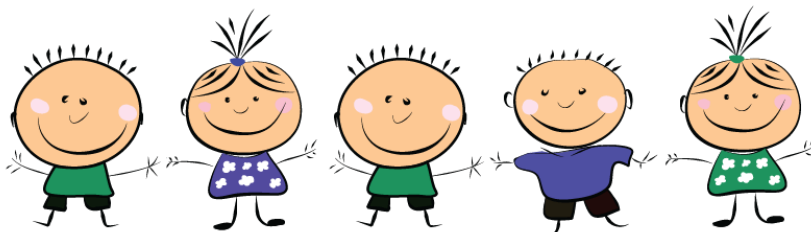
<https://www.flickr.com> and search for WCLPS, or go direct to:

<https://www.flickr.com/photos/165477203@N02/>

Or, watch our videos on **Vimeo**.

Go to <https://vimeo.com/> and search for WCLPS, or go direct to:

<https://vimeo.com/manage/showcases/5676289>



With best wishes  
from Mr Smith & the  
whole staff team.

