



**Willerby Carr Lane**  
Primary School

Carr Lane, Willerby, Hull, HU10 6JT  
Telephone: 01482 653388  
Email: [admin@carrlaneprimary.net](mailto:admin@carrlaneprimary.net)  
Twitter: @WCLPS  
[Willerbycarrlaneprimary.org.uk](http://Willerbycarrlaneprimary.org.uk)

# Newsletter

8th September, 2022

Willerby Carr Lane Primary School Newsletter



## Welcome back to the start of a new school year.

It is such an exciting time of the year - new books with pristine lined pages, new teachers and newly upgraded parts of the school.

It has been a pleasure to welcome back all of our little friends and also to welcome our new EYFS cohort. The children have come back with super, big smiles and great energy, drive and ambition. It promises to be a great year.

During the holiday period there has been a lot going on at school. We have new lockers in the Year 4,5, 6 corridor which look amazing and should, hopefully, reduce the inevitable mess and lost property which resulted from congested coat pegs.

We have also repainted the breakfast and after school club as well as the render outside of Miss Carmichael's classroom. It all looks a lot brighter and more cheery.

Our biggest project has, of course, been our new EYFS provision. The £1/4m project, supported by the LA, has seen a complete redevelopment of the old 1960's reception classroom

space. Walls have come down and spaces opened up. Ceilings, plumbing, toilets, flooring and electrics have all been ripped out and the entire area renovated from an empty shell. It is unrecognisable from last year.

We then commissioned the Early Excellence Centre (EEX) in Huddersfield to help us redesign the educational provision within our new space.

The EEX are an established national leader of pedagogy, provision and practice, specialising in young children's education. They champion the development of inspirational learning and teaching, offering expert advice, support and training to schools and settings across the UK.

The week before school opened saw us take delivery of £20k worth of new furniture and resources to support our vision for excellence with EYFS.

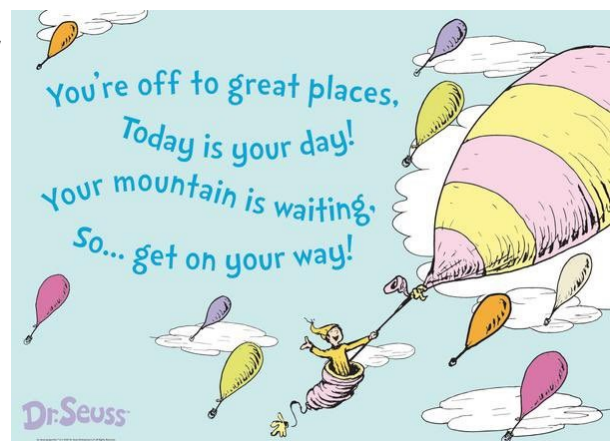
Our new EYFS area is not only beautiful, attractive and

engaging, but, importantly, it also offers us the facilities to provide truly excellent EYFS education.

I must say a massive thank you to all staff involved in getting us to this point. It took a lot of hard work to get the design details correct and to ensure the builders and suppliers delivered to spec and on time and to budget. And, to make sure we were ready to open on time on Tuesday. Well done to the WCLPS team !

As always we are here to work with you to provide the best for your children. If you have any concerns then please raise them with the relevant staff.

We look forward to a fabulous and exciting year ahead.



# Before



# Early Years Play



AFTER





## New Lockers in Years 4, 5 and 6

We have replaced the rows of overcrowded coat pegs with lockers in the Year 4,5 and 6 cloakroom.

The previous coat pegs were so crammed in that children had great difficulty hooking their bags and coats on. Inevitably, items of clothing would end up on the floor and children would struggle to find their bags or pe kit behind a wall of coats.

The new lockers have freed up floor space and provide a clear space for each child to store and retrieve their belongings.

It has made a massive difference already, with no belongings on the floor.

We shall monitor how well they are functioning with a view to replacing coat hooks in the Year 3 cloakroom at some time in the future... finances permitting.



***Please remember to continue to clearly label all belongings to help us get lost property back to its rightful owner!***

Freshly painted...



## SAFETY FIRST

It is our paramount duty to ensure that children are kept safe at school. As we always say: "Safe – Happy – Learning". To this end may I express my sincere thanks for the full cooperation and understanding shown for the school's security arrangements. As always you have been amazing. THANK YOU. The following is a reminder of some key procedures:

External school doors are shut and locked promptly at 8.50am. Children have 10 minutes to enter school—between 8.40 and 8.50am. After 8.50am, staff are under instructions to lock classroom doors and not to let children enter. Late arrivals will need to enter the school via the front entrance.

Children must not arrive unaccompanied on the school premises prior to 8.40am. We do not have any staff on duty to look after children in the morning prior to this. If you need to drop your child off earlier you will need to make use of our Breakfast club or make alternative arrangements.

Children going home for lunch must return at 1.10pm prompt but not before. This is to ensure that we know which children are on site at all times in case of emergency.

**The school car park barrier is down and gates are LOCKED BETWEEN 8.30am and 4.45pm.**

The school car park must not be used for dropping off or picking up children between these times.

We have many staff and deliveries arriving, leaving and manoeuvring in tight spaces at different times of day. It presents a major danger and hazard. The gates are therefore locked and staff have been instructed not to open them.

Parents picking up from a club at 4.30pm must not use the car park. It may seem safe for a single parent to try to do so, but we often have between 30 and 60 children at after school clubs on any one evening. If parents were allowed to use the car park to pick them up, then we would be bound to have a serious accident sooner or later.

The only exceptions to this are:

- Parents dropping off for Breakfast club **prior to 8.30am**
- Parents picking up from Out of

School Club, **after 4.45pm**

- Parents picking up/dropping off a child for a medical appointment during the school day between 9.30am and 3.00pm

In all such cases, the parent must accompany their child through the car park.

Thank you all in advance for your understanding. Parent/Carers can be confident of the absolute safety of their children whilst at school and if any Parent/Carer spots a weakness in our procedures, I would be grateful if you will please let us know.

## Cycling and Scooting to school

Children in Year 6 are allowed to cycle to school unaccompanied as long as they are wearing a cycle helmet. Other pupils may cycle if accompanied by their parents.

We also welcome children scooting to school – a fun and healthy way to arrive – and we provide lots of scooter racks.

For everyone's safety, children are not allowed to scoot or ride on the playground in the morning or after school – the playgrounds are too congested with little children and adults.

*(Football is also encouraged during the day, but again for everyone's safety, not before school.)*



## Year group Welcome Meetings

Each year group will be holding an online welcome meeting for parents from the week beginning 19 September—the actual dates for each year group and the Zoom meeting joining codes will be sent out next week. The meetings will be from 6pm to 7pm.

*(Please note that this does not include Year 1 who already held their welcome meeting at the end of last Summer Term)*

Your attendance would be very valuable. It is a great opportunity to meet your child's new class teacher and to find out about the key learning goals and routines for the year group and ask any questions you may have.

We will also be explaining the expected standards in **Maths and English** in your child's year group and how you can help.





## School Meals—Great Nutrition & Great Value

Our school meals continue to be great value for a nourishing, healthy and balanced hot dinner. Our price is currently £2.25 which is a lot cheaper than many other schools. By comparison, many schools currently charge in the region of £2.75.

The Autumn menu has been emailed to parents and is also available on the school website. All School Meal menus will be on a 3 week rota.

We are offering a varied hot lunch, jacket potato or sandwich meal choice with salad, dessert and fruit. We are also excited to include an all-day breakfast as an option within the Autumn menu.

Please note that for any pre-packaged foods, such as sandwiches, salad pots or cakes that are provided off-site, for example trips or children eligible for benefits-related free school meals and who are remote learning due to Public Health

guidance, all ingredients and allergens will be provided on the school's website.

The school also request that due to some children's severe allergens, nuts are not provided in home packed lunches/products and to be mindful to cut fruit especially grapes lengthways. If your child has dietary or allergen requirements, please contact the office.

Healthy school food has obvious benefits and can help pupils establish healthy habits for life. Healthy school food can also help to improve pupil's readiness to learn.

## Ideas for Packed Lunches

Pitta Bread, Hummus, Cheese Quesadilla, Deli Meat and Cheeses, Boiled Eggs, Pasta Salad, Vegetable Sticks, Veggie Wraps, Fruit Snacks, Granola Bars. Please see the NHS website, Change4life for healthier lunchbox recipes, ideas and swaps.

## Free School Meals

EYFS, Year 1 & 2 children's school meals are free under the Government's Universal Free School Meal scheme, regardless of whether you are entitled to benefits-related free school meals.

Once your child starts Year 3, meals are to be paid for in advance using SIMS Pay (renamed Pay 360), if you have not used this for a while contact the office asking for a Pay 360 invitation code, school meals are £2.25 per day to be made payable in advance.

If you think your child is eligible for benefits-related Free School Meals or if you are unsure, please contact Mrs Clipson in the office – please note it is completely confidential. Every child eligible for benefits-related free school meals benefits both you and the school as we received Pupil Premium funding for your child; we pass this on to you through Free of Charge visits worth up to £38 per year and various other school support.

## Healthy Packed Lunches

We believe it is important that the young children in our care eat healthily. In the science curriculum, pupils are made aware of the benefits of healthy eating and the risks of a poor diet. In health education lessons we learn how to keep both our bodies and minds healthy.

Our school meals are prepared following national guidance on nutrition and provide a balanced diet. When children bring in their own packed lunch from home, we also ask that it be healthy, nutritious and well-balanced.

We recommend that a balanced packed lunch should

contain:

- starchy food (e.g. bread, bagel, wrap, pitta or pasta)
- protein foods (e.g. meat, fish, eggs beans)
- a dairy item (e.g. cheese or yoghurt)
- vegetables or salad
- a portion of fruit
- a drink such as water or fruit juice

### The lunch box may also contain ONE of the following

- for that extra energy boost:
- Small packet of crisps
  - Sweet option – small piece of cake, biscuit or cookie.



There should be no sweets or chocolate or fizzy drinks in school and, as I'm sure you'll understand, should they come into school, they will be confiscated and disposed of.

### **Health & Safety notes**

**Any grapes must be cut in half to avoid presenting a choking hazard)**

**Products containing nuts must not be provided due to allergies within school**

## Congratulations

Congratulations to Mrs Smith who gave birth to Aria during the summer holidays. Mum and Aria are doing well and thank everyone for their kind wishes.



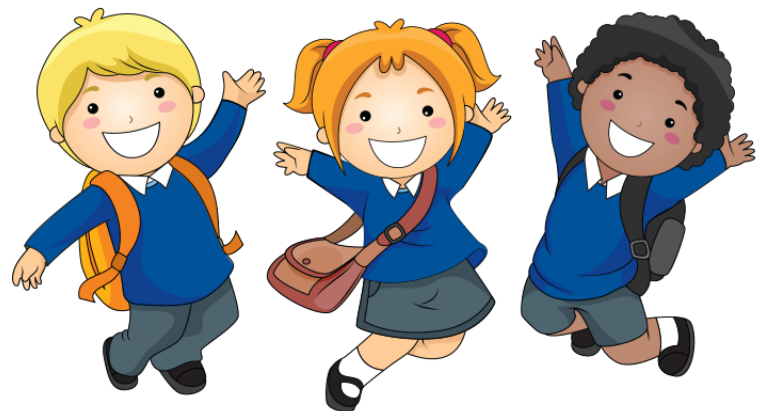
## Re-uniform at Carr Lane

A new re-uniform group has been established for Willerby Carr Lane Primary School!

If you have unwanted school uniform that is still in good condition, you can create a post and offer it out to someone, or you can donate it straight to school and we will take it from there!

If you are wanting items of uniform, you can either post to the page with what you are looking for, or private message us and we will see if we have what you need. We will also be holding days during the school holidays to come in and collect items of uniform – check the page for updates!

Children grow so quickly! Let's normalise re-using good quality clothes - not only is it good for the environment but every little helps in terms of saving money!



Find us on Facebook

<https://www.facebook.com/groups/841974716701402/permalink/844234453142095/>

or search 'Facebook Group Willerby Carr Lane Re-uniform'

Many thanks to all involved in running the group, including Miss Carmichael and Miss Mudd.



**Is your child due to start school in  
September 2023?**

**Then come and see our brand new EYFS setting  
and find out what Willerby Carr Lane Primary School  
can offer your child**



**Tours around school are available on:**

**Wednesday 28<sup>th</sup> September at 9.00am**

**Thursday 6<sup>th</sup> October at 9.00am**

**Wednesday 16<sup>th</sup> November at 9.00am**

**Tuesday 10<sup>th</sup> January at 1.30pm**



**Call Dawn, Jane or Sarah on 01482 653388  
to book your visit**



## School Uniform Policy

At Carr Lane Primary School, we believe that what people wear affects the way they behave. The following school uniform policy is intended to foster positive working attitudes and pride in the school. It also aids social equality. The uniform policy is similar in principle to that required at Wolfreton, and so prepares children for their transfer.

We believe that children should be dressed as children appropriate to their age. Children should not wear nail varnish, jewellery, make up or any tattoos, including the stick-on variety. A single small stud earring may be worn in each ear, if the ear has been pierced. Hair styling should be natural / standard in style and colour. Wide hair bands which resemble headscarves / pom-poms etc are not accepted. Shaved heads, lines cut into the hair, and sculpting and artificial colours etc. are not acceptable.

### School Uniform

Daily Wear		
Trousers	Plain black or dark grey	
Tailored shorts, culottes	Plain black or dark grey	Knee length
Skirt	Plain black or dark grey	Knee length
Dress	Blue checked or dark grey	
Blouse, shirt, polo shirts with collar	Plain white	Long enough to tuck in
Sweatshirt/ cardigan	Navy or blue	Preferably with school logo
Socks	Plain black, dark grey, white, dark blue	
Tights	Plain black or dark grey	Opaque
Skirts	Plain black or dark grey	Knee length
Shoes	Black	Low-heeled black shoes Black trainer shoe hybrid (eg Nike Airforce 1) without obvious branding  Not boots or fashion shoes
Wellies/ boots		For extremes of wet weather/ snow - with change of shoes when indoors
PE Kit		
T-shirt	Plain white	Preferably with school logo in house colour
Shorts	Navy or blue	
Sand shoes		or bare feet for dance and gymnastics
Trainers		
Football boots		
Shin pads		
Sports socks		
Tracksuit	Navy or blue	
Sweatshirt	Navy or blue	

### PE Health and Safety

For reasons of hygiene children must change for all PE and games lessons.

Stud earrings must be removed. Where earrings cannot be removed, i.e. during the eight week period following the date of piercing, parents should provide tape to cover them.

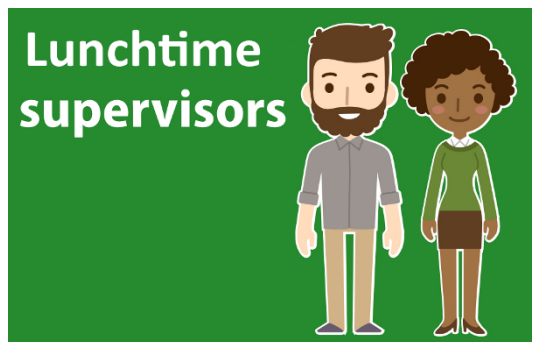
Hair should be tied back.

## Help your child develop a Growth Mindset



### Staff Vacancy

We have a vacancy for a Lunch Time Supervisor. If you think you might be interested, please give our School Business Manager, Debbie Brown, a ring and have a chat about what's involved.



### Labelling uniform

We do our best to reunite school uniform with children but it is an impossible task when the uniform is unnamed. Please do a quick check of the labelling periodically through the year – it may be that what you write on in September gets washed off.

Just imagine, we have 424 children in school, so ... on any one day we have 848 sandshoes/ trainers + 424 cardigans or jumpers + 424 PE shorts + 848 outdoor shoes + 424 PE tops +

424 coats + 424 book bags + 200 sandwich bags. That's potentially a lot of uniform to keep track of. Please help us by checking your



labelling regularly.

Help us to help you!

Please label all school uniform, it's the simplest way to ensure that anything lost makes its way back to you! You really would not believe the small mountain of lost property that build up over the year!

It doesn't have to be with fancy labels; a sharpie pen or fabric marker will withstand the washing machine. If using uniform from our re-uniform service, then don't forget to cross out any old names!

Don't forget to label P.E kits, coats and shoes/trainers too!



### Holidays in Term Time

The Local Authority Policy on Term Time Holidays adopted by the school Governing Body is very black and white.

It is not possible to authorise absences during term time for a holiday.

This policy applies even where: parents have employment constraints; children have 100% attendance to date; children are doing very well academically; or the holiday is seen as 'once in a lifetime' and so on.

The potential for fines remain based on accumulated unauthorised absence. Fines are levied by the LA and monies are kept by the LA. Any fines incurred apply to each parent and for each child.

If you intend to take an absence during term time, please inform the office.



## Car Parking Hazards – Let’s Look Out For Our Little Friends

We respectfully request that you please park away from the school.

And please **DO NOT** drive down the cul-de-sac part of Bellfield Drive.

It’s far too narrow and congested and so endangers children.

It might get you 30 seconds closer to school but it should play on your conscience and it’s also going to annoy so many other parents that it’s really not worth it.

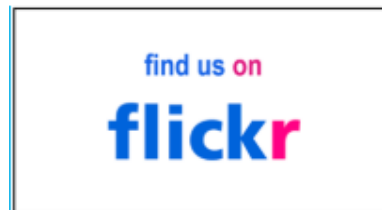
Remember, zig-zag lines mean ‘No Parking, No Stopping & No Dropping’

Your children will not suffer by walking a few extra yards to your car.



### Want to see more of what goes on at WCLPS?

Then find and follow us on the internet:



Or, watch our videos on **Vimeo**. Go to <https://vimeo.com/> and search for WCLPS, or go direct to:

<https://vimeo.com/manage/showcases/5676289>

**School Website:** packed with information:

<https://willerbycarrlaneprimary.org.uk/>

Or, look at our photo albums on **flickr**. Go to

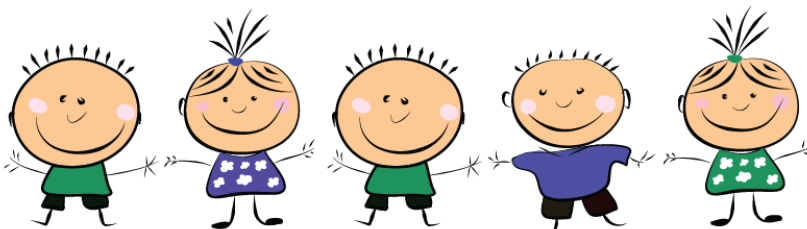
<https://www.flickr.com> and search for WCLPS, or go direct to:

<https://www.flickr.com/photos/165477203@N02/>



Or follow us on **Twitter:**

@WCLPS @WCLPSEYFS  
@WCLPSYear1 @WCLPSYear 2  
etc.





## School Clubs and Activities offered 2022

### Autumn Term – 1st half

Day	Lunchtime –clubs/activities		After school clubs/ activities	
	Activity	Staff	Activity	Staff
Monday	Cricket Yrs 4, 5, 6	Mr Scott	3.30-4.30pm Yrs 1, 2, 3 Dodgeball	Mr Taylor KS1 hall
	Years 5 & 6 Girls Football	Mr Clark	3.30-4.30pm	Miss Tindall KS2 Choir – The Hub
Tuesday	Years 3 & 4 Girls Football	Mr Clark	3.30-4.30pm Dance	Mrs Andersen KS1 Hall
			4.30-5.30pm Musical Theatre	Mrs Andersen KS1 Hall
Wednesday	Year 3 Boys Football	Mr Clark	3.30-4.30pm Yrs 4, 5, 6 Dodgeball	Mr Taylor KS2 Hall
	Tag Rugby Yr 5/6	Mr Scott	3.30-4.30pm Basketball Yrs 3-6	Mr Mills KS1 Hall
Thursday	Year 5 & 6 Football	Mr Robinson/Mr Clark	Orchestra for Violin	Mrs Brewster Library
	Team Games Yr 4	Mr Scott	3.30-4.30pm Drama	Mrs Andersen KS1 Hall
Friday	Year 4 Boys Football	Mr Clark	3.30-4.30pm Yr 4, 5, 6 Football	Mr Taylor KS2 Hall
	Chess	Mr Smith	12.10-12.45 Ukulele	Mr Browning in 3B
	Swimming Club Yr 6	Mrs Brothwell, Mr Scott, Mr Clark		

*During wet lunchtimes, clubs may be cancelled or altered.*

It is also possible to enrol your child for musical instrument lessons which take place during the school day. There are a range of instruments that your child can learn: violin, ukulele, guitar, percussion. These lessons take place individually or in very small groups. A fee is payable.

Free clubs run by school staff/ volunteers.







# Willerby Carr Lane Primary School

## School Term Dates 2023 - 2024 Academic Year

AUTUMN TERM 2023																																			
	August							September							October							November							December						
Monday	7	14	21	28	4	11	18	25	2	9	16	23	30	6	13	20	27	4	11	18	25	30	6	13	20	27	4	11	18	25					
Tuesday	1	8	15	22	29	5	12	19	26	3	10	17	24	31	7	14	21	28	5	12	19	26	30	7	14	21	28	5	12	19	26				
Wednesday	2	9	16	23	30	6	13	20	27	4	11	18	25	1	8	15	22	29	1	8	15	22	29	1	8	15	22	29	1	8	15	22	29		
Thursday	3	10	17	24	31	7	14	21	28	5	12	19	26	2	9	16	23	30	2	9	16	23	30	2	9	16	23	30	2	9	16	23	30		
Friday	4	11	18	25	1	8	15	22	29	6	13	20	27	3	10	17	24	3	10	17	24	3	10	17	24	3	10	17	24	3	10	17	24		
Saturday	5	12	19	26	2	9	16	23	30	7	14	21	28	4	11	18	25	4	11	18	25	4	11	18	25	4	11	18	25	2	9	16	23	30	
Sunday	6	13	20	27	3	10	17	24	1	8	15	22	29	1	8	15	22	29	5	12	19	26	5	12	19	26	3	10	17	24	3	10	17	24	31

SPRING TERM 2024																																	
	January							February							March							April											
Monday	1	8	15	22	29	5	12	19	26	4	11	18	25	1	8	15	22	29	1	8	15	22	29	1	8	15	22	29	1	8	15	22	29
Tuesday	2	9	16	23	30	6	13	20	27	5	12	19	26	2	9	16	23	30	2	9	16	23	30	2	9	16	23	30	2	9	16	23	30
Wednesday	3	10	17	24	31	7	14	21	28	6	13	20	27	3	10	17	24	3	10	17	24	3	10	17	24	3	10	17	24	3	10	17	24
Thursday	4	11	18	25	1	8	15	22	29	7	14	21	28	4	11	18	25	4	11	18	25	4	11	18	25	4	11	18	25	4	11	18	25
Friday	5	12	19	26	2	9	16	23	1	8	15	22	29	5	12	19	26	5	12	19	26	5	12	19	26	5	12	19	26	5	12	19	26
Saturday	6	13	20	27	3	10	17	24	2	9	16	23	30	6	13	20	27	6	13	20	27	6	13	20	27	6	13	20	27	6	13	20	27
Sunday	7	14	21	28	4	11	18	25	3	10	17	24	31	7	14	21	28	7	14	21	28	7	14	21	28	7	14	21	28	7	14	21	28

SUMMER TERM 2024																														
	May							June							July															
Monday	6	13	20	27	3	10	17	24	1	8	15	22	29	1	8	15	22	29	1	8	15	22	29	1	8	15	22	29		
Tuesday	7	14	21	28	4	11	18	25	2	9	16	23	30	2	9	16	23	30	2	9	16	23	30	2	9	16	23	30		
Wednesday	1	8	15	22	29	5	12	19	26	3	10	17	24	31	3	10	17	24	31	3	10	17	24	31	3	10	17	24	31	
Thursday	2	9	16	23	30	6	13	20	27	4	11	18	25	4	11	18	25	4	11	18	25	4	11	18	25	4	11	18	25	
Friday	3	10	17	24	31	7	14	21	28	5	12	19	26	5	12	19	26	5	12	19	26	5	12	19	26	5	12	19	26	
Saturday	4	11	18	25	1	8	15	22	29	6	13	20	27	6	13	20	27	6	13	20	27	6	13	20	27	6	13	20	27	
Sunday	5	12	19	26	2	9	16	23	30	7	14	21	28	7	14	21	28	7	14	21	28	7	14	21	28	7	14	21	28	

### School Closure Days

School Holiday	
Bank Holiday	
School Training Day	