



Willerby Carr Lane
Primary School

Carr Lane, Willerby, Hull, HU10 6JT
Telephone: 01482 653388
Email: admin@carrlaneprimary.net
Twitter: @WCLPS
Willerbycarrlaneprimary.org.uk

Newsletter

22 May, 2023

Willerby Carr Lane Primary School Newsletter

Muddy Boots Gang—relaunched !



We are really excited to announce the relaunch of our Muddy Boots Gardening Gang. Our gardening club has laid dormant for a few years but is now back up and running under the green-fingered hands of Miss Carmichael and ably assisted by a hardy groups of parent volunteers. So, if you fancy some peas and quiet, there's never a dill moment; don't herb your enthusiasm — get a twiggle on !! See Miss Carmichael or talk to our office if you want to join the fun and do your good weed for the day !!



WCLPS Year 2 @wclpsyear2 · May 19
Replying to @WCLPSMuddyBoots
Please follow our Muddy Boots club! We meet on a Thursday evening and Friday lunchtime 🌻🌻🌻

What's a gardener's favourite Beatles song?

Lettuce Be



WCLPS YEAR 5

@wclpsye... May 17

TWITTER

Copying the hieroglyphs



WCLPS YEAR 5

@wclpsye... May 12

TWITTER

And finally, some more great teamwork today with the children's independent writes. They were placed with a partner they usually don't work with and asked to help peer mark their work. Lots of useful comments and great independence...



← ↻ 0 ❤️ 5 ↗



WCLPS YEAR 4

@wclpsye... May 12

TWITTER

4WE have been learning how to modify Microsoft Excel spreadsheets 📊



WCLPS YEAR 1

@wclpsye... May 17

TWITTER

Meet our new class puppets! 1P worked as a team to create the chosen designs 🌟



← ↻ 0 ❤️ 8 ↗



WCLPS YEAR 6

@wclpsye... May 4

TWITTER

Super proud of our rounders squad tonight. Well done - you look very pleased with yourselves!



WCLPS EYFS

@wclpseyf... May 4

TWITTER

1 newly developed construction shed full of open ended resources = a world of possibilities!





WCLPS YEAR 5

@wclpsye... May 12

TWITTER

5M were given a simple question today, how can you make a bridge with just a piece of paper?

The answers were not so simple though! Some great teamwork on display as the children learned all about bridge...



← ↻ 0 ❤️ 7



WCLPS EYFS

@wclpseyf... May 11

TWITTER

When nature provides exciting water play opportunities!



WCLPS YEAR 5

@wclpsye... May 11

TWITTER

Yesterday, 5M took on a hieroglyphic translation challenge! They had to use their own Rosetta Stone to translate the messages and solve the codes!



← ↻ 0 ❤️ 3



WCLPS YEAR 1

@wclpsye... May 5

TWITTER

1W are having so much fun making crowns and commemorative coronation plates! We have learnt lots of facts about King Charles III too!



WCLPS YEAR 1

@wclpsye... May 4

TWITTER

Our sunflowers have been busy growing, we have been recording the changes in our sunflower diaries!



WILLERBY CARR LANE

@WCLPS May 5

TWITTER

Fabulous Coronation assembly to round off our themed day. Many thanks to Tracey (chair of) and Caroline for being our special guests of honour and to Willerby Parish Council who awarded all children with a...



← ↻ 2 ❤️ 21





Sports Days

We will be keeping our fingers treble crossed for beautiful clear skies on our Sports Days.

Please note, Sports Days are slightly earlier this year due to the LA block booking our Year 4's to go swimming later in the term.



We are always weather dependent and it is always our least favoured decision-making task of the year: whether to hold the sports day afternoons or cancel because of weather! Typically, to make our job more difficult, the skies are often grey in the morning, the ground damp and slippery and the



various weather forecasts are 50:50 over the chance of showers!!!

None of us wants wet, cold children or children slipping and injuring themselves. On the other hand we don't want to prematurely cancel Sports Days only to end up sitting inside on what turns out to be a sunny afternoon. With the advent of text messaging we are able to delay making a final decision, if necessary, to later in the morning. However, we are mindful that parents need to make arrangements with their places of work as well as travel here. We will therefore try to make a decision as early as possible but will keep you informed in any event through the morning by text.

I would like to invite all parents to come dressed in the colours of their children's house. We often have parents who come in matching red, blue, green or yellow colours – perhaps just an appropriately coloured top, jumper or flag would do. And don't forget to make lots of cheering noises in support of all our little friends whatever their house colour.

As usual we will be running traditional Sports Day Races in the afternoon: one afternoon for the Infants (EYFS & Key Stage 1) and one afternoon for Key Stage 2.

In addition, as in previous years, we will also be holding a whole school 'carousel of activities' on the field one morning.

Please see the diary date on page 5 for details of when the Sports Days events are scheduled.

Most parents attend the relevant afternoon of traditional sports races but don't forget that you are also welcome to come and watch the whole school carousel of



activities on the specified morning. *(Please note that secondary school children are not allowed to attend Sports Days.)*

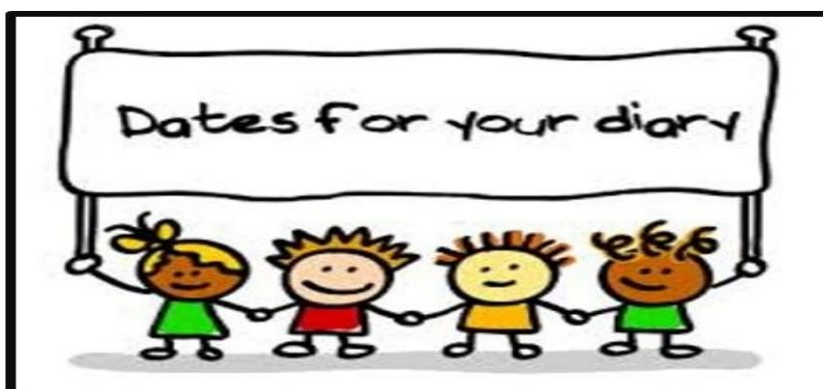
If time permits, we will also try to fit in a Staff race, Mums' race and Dads' race. **If you wish to take part, it is at your own risk. Please ensure you are wearing appropriate footwear (i.e. trainers) and are not suffering from any medical condition that would make it inadvisable.**

Enjoy the afternoon

We have limited seating available so please bring camping chairs if you have them.

Refreshments will be on sale courtesy of the PFA





Event	Date	Time
Y6 PGL Residential Visit – Caythorpe Court	5-7 June 2023	return Weds approx 3.30pm
Residential Visit information evening for current Year 5s	13 June	6pm - online
PFA Father's Day Fair	13 June	
Music/Instrument Concert	14 June	6pm
Sports Day Infant races – 1 st attempt	14 June	1pm
Whole school sports carousel – 1 st attempt	15 June	9am
Sports Day KS2 races – 1 st attempt	15 June	1pm
Non-uniform day for Summer Fair: KS2 - bottles/ Infants - Chocolates	16 June	
EYFS – new starters for Sept 2023 - Parents' Induction Meeting	21 June	6pm to 7.00pm
Sports Day Infant races – contingency	21 June	1pm
Whole school sports carousel – contingency	22 June	9am
Sports Day KS2 races – contingency	22 June	1pm
PFA Summer Fair – 1 st attempt	23 June	3.30pm to 6.00pm
PFA Summer Fair – 2 nd attempt	30 June	3.30pm to 6.00pm
EYFS—Transition to Year 1 Meeting	5 July	6.00pm onloine
Y6 End of year show – to Parents	6 July	2.15pm
Y6 End of year show – to Parents	6 July	6.00pm
Y2 End of year show – to Parents	12 July	2.15pm
Y2 End of year show – to Parents	12 July	6.00pm
Moving Up Morning for all classes EYFS to Y5 (Three days for Y6—12-14th July to Wolfreton)	12 July	
Y6 Leavers Celebration evening	19 July	6.45pm
Sponsored Walk	20 July	Morning

ECO Gang Community Project

Well done to Mr Browning, Miss Wilshere and all the parents and pupils who volunteered to take part in our "Big School Clean Up". The Eco-team came into school on Saturday morning and collected 16 large bags of litter from around the school site. We have a very large school site and lots of bushes and wooded areas that trap litter blown in from off-site.

Fantastic job in looking after the environment everyone !!



Healthy Packed Lunches

We believe it is important that the young children in our care eat healthily. In the science curriculum, pupils are made aware of the benefits of healthy eating and the risks of a poor diet. In health education lessons we learn how to keep both our bodies and minds healthy.

Our school meals are prepared following national guidance on nutrition and provide a balanced diet. When children bring in their own packed lunch from home, we also ask that it be healthy, nutritious and well-balanced.

We recommend that a balanced packed lunch should contain:

- starchy food (e.g. bread, bagel, wrap, pitta or pasta)
- protein foods (e.g. meat, fish, eggs, beans)
- a dairy item or equivalent (e.g. cheese or yoghurt)
- vegetables or salad
- a portion of fruit
- a drink such as water or fruit juice



20 EASY HEALTHY LUNCH IDEAS



The lunch box may also contain ONE of the following for that extra energy boost:

- Small packet of crisps
- Sweet option – small piece of cake, biscuit or cookie.

There should be no sweets or chocolate or fizzy drinks in school and, as I'm sure you'll understand, should they come into school, they will be confiscated and disposed of.

Health & Safety notes



Any grapes must be cut in half to avoid presenting a choking hazard

Products containing nuts, e.g. Nutella Spread must NOT be provided due to children and staff with serious allergies (including air-borne allergies) within school

“Don’t forget to BE SUN SAFE !”

School lunch and break times add up to a total of 90 minutes a day. On high UV days, it can be all too easy to burn, so please follow the Sun Smart advice.

Children may bring their own sun cream labelled with their name, but please be aware that staff are unable to personally administer. We therefore advise the use of a long lasting sun cream, such as P20, applied just before school, which offers up to 10 hours protection (Other brands are no doubt available !)



The poster features the Sun Smart logo at the top right, which includes a sun icon and the text 'Sun Smart'. Below the logo, the title 'BE SUN SMART' is written in large, bold, yellow letters. To the left of the title, there are five icons representing sun safety tips: a red shirt, a bottle of sunscreen, a green hat, a pair of sunglasses, and a colorful beach umbrella. To the right of these icons, the text 'Put on a Shirt', 'Put on Sunscreen', 'Wear a Hat', 'Wear Sunglasses', and 'Stay in the Shade' is written in a simple, black font. At the bottom right of the poster, there is a cartoon illustration of a boy wearing a blue bucket hat, red sunglasses, a blue long-sleeved shirt, and red shorts. He is holding a bottle of sunscreen in his right hand. The background of the poster is white, and the bottom section has a yellow background with the text 'SHARE THE SUN SAFE STORY WITH YOUR CHILD' in bold, black letters.

BE SUN SMART

Put on a Shirt

Put on Sunscreen

Wear a Hat

Wear Sunglasses

Stay in the Shade

SHARE THE SUN SAFE STORY WITH YOUR CHILD

Willerby Carr Lane Primary School Newsletter

Willerby Carr Lane Primary School



School Term Dates 2022 - 2023 Academic Year

AUTUMN TERM 2022																																									
	August							September							October							November							December												
Monday	1	8	15	22	29	5	12	19	26	3	10	17	24	31	7	14	21	28	5	12	19	26	1	8	15	22	29	7	14	21	28	5	12	19	26						
Tuesday	2	9	16	23	30	6	13	20	27	4	11	18	25	8	15	22	29	8	15	22	29	8	15	22	29	8	15	22	29	8	15	22	29	6	13	20	27				
Wednesday	3	10	17	24	31	7	14	21	28	5	12	19	26	9	16	23	30	9	16	23	30	9	16	23	30	9	16	23	30	9	16	23	30	9	16	23	30	7	14	21	28
Thursday	4	11	18	25	1	8	15	22	29	6	13	20	27	10	17	24	10	17	24	10	17	24	10	17	24	10	17	24	10	17	24	10	17	24	10	17	24	10	17	24	
Friday	5	12	19	26	2	9	16	23	30	7	14	21	28	11	18	25	11	18	25	11	18	25	11	18	25	11	18	25	11	18	25	11	18	25	11	18	25	11	18	25	
Saturday	6	13	20	27	3	10	17	24	1	8	15	22	29	12	19	26	12	19	26	12	19	26	12	19	26	12	19	26	12	19	26	12	19	26	12	19	26	12	19	26	
Sunday	7	14	21	28	4	11	18	25	2	9	16	23	30	13	20	27	13	20	27	13	20	27	13	20	27	13	20	27	13	20	27	13	20	27	13	20	27	13	20	27	

SPRING TERM 2023

	January							February							March							April						
Monday	2	9	16	23	30	6	13	20	27	6	13	20	27	3	10	17	24											
Tuesday	3	10	17	24	31	7	14	21	28	7	14	21	28	4	11	18	25											
Wednesday	4	11	18	25	1	8	15	22	1	8	15	22	5	12	19	26												
Thursday	5	12	19	26	2	9	16	23	2	9	16	23	6	13	20	27												
Friday	6	13	20	27	3	10	17	24	3	10	17	24	7	14	21	28												
Saturday	7	14	21	28	4	11	18	25	4	11	18	25	1	8	15	22												
Sunday	1	8	15	22	29	5	12	19	26	5	12	19	26	2	9	16	23											

	Autumn							Spring							Summer						
Monday	35	35	29	30	29	37	School Holiday	35	35	29	30	29	37	School Holiday	35	35	29	30	29	37	School Holiday
Tuesday	35	35	29	30	29	37	Bank Holiday	35	35	29	30	29	37	Bank Holiday	35	35	29	30	29	37	School INSET Closure Day
Wednesday	35	35	29	30	29	37	School INSET Closure Day	35	35	29	30	29	37	School INSET Closure Day	35	35	29	30	29	37	School INSET Closure Day
Thursday	35	35	29	30	29	37	School INSET Closure Day	35	35	29	30	29	37	School INSET Closure Day	35	35	29	30	29	37	School INSET Closure Day
Friday	35	35	29	30	29	37	School INSET Closure Day	35	35	29	30	29	37	School INSET Closure Day	35	35	29	30	29	37	School INSET Closure Day
Saturday	35	35	29	30	29	37	School INSET Closure Day	35	35	29	30	29	37	School INSET Closure Day	35	35	29	30	29	37	School INSET Closure Day
Sunday	35	35	29	30	29	37	School INSET Closure Day	35	35	29	30	29	37	School INSET Closure Day	35	35	29	30	29	37	School INSET Closure Day

SUMMER TERM 2023

	May							June							July						
Monday	1	8	15	22	29	5	12	19	26	3	10	17	24	31							
Tuesday	2	9	16	23	30	6	13	20	27	4	11	18	25								
Wednesday	3	10	17	24	31	7	14	21	28	5	12	19	26								
Thursday	4	11	18	25	1	8	15	22	29	6	13	20	27								
Friday	5	12	19	26	2	9	16	23	30	7	14	21	28								
Saturday	6	13	20	27	3	10	17	24	1	8	15	22	29								
Sunday	7	14	21	28	4	11	18	25	2	9	16	23	30								

EXTRA BANK HOLIDAY

MAY 8th

In honour of King Charles III's Coronation

Willerby Carr Lane Primary School Newsletter



Willerby Carr Lane Primary School School Term Dates 2023 - 2024 Academic Year

AUTUMN TERM 2023																						
	August			September			October			November			December									
Monday	7	14	21	28	4	11	18	25	2	9	16	23	30	6	13	20	27	4	11	18	25	
Tuesday	1	8	15	22	29	5	12	19	26	3	10	17	24	31	7	14	21	28	5	12	19	26
Wednesday	2	9	16	23	30	6	13	20	27	4	11	18	25	1	8	15	22	29	6	13	20	27
Thursday	3	10	17	24	31	7	14	21	28	5	12	19	26	2	9	16	23	30	7	14	21	28
Friday	4	11	18	25	1	8	15	22	29	6	13	20	27	3	10	17	24	1	8	15	22	29
Saturday	5	12	19	26	2	9	16	23	30	7	14	21	28	4	11	18	25	2	9	16	23	30
Sunday	6	13	20	27	3	10	17	24	1	8	15	22	29	5	12	19	26	3	10	17	24	31

SPRING TERM 2024																					
	January			February			March			April											
Monday	1	8	15	22	29	5	12	19	26	4	11	18	25	1	8	15	22	29			
Tuesday	2	9	16	23	30	6	13	20	27	5	12	19	26	2	9	16	23	30			
Wednesday	3	10	17	24	31	7	14	21	28	6	13	20	27	3	10	17	24	3	10	17	24
Thursday	4	11	18	25	1	8	15	22	29	7	14	21	28	4	11	18	25	4	11	18	25
Friday	5	12	19	26	2	9	16	23	1	8	15	22	29	5	12	19	26	5	12	19	26
Saturday	6	13	20	27	3	10	17	24	2	9	16	23	30	6	13	20	27	6	13	20	27
Sunday	7	14	21	28	4	11	18	25	3	10	17	24	31	7	14	21	28	7	14	21	28

SUMMER TERM 2024																	
	May			June			July										
Monday	6	13	20	27	3	10	17	24	1	8	15	22	29				
Tuesday	7	14	21	28	4	11	18	25	2	9	16	23	30				
Wednesday	1	8	15	22	29	5	12	19	26	3	10	17	24	31			
Thursday	2	9	16	23	30	6	13	20	27	4	11	18	25	4	11	18	25
Friday	3	10	17	24	31	7	14	21	28	5	12	19	26	5	12	19	26
Saturday	4	11	18	25	1	8	15	22	29	6	13	20	27	6	13	20	27
Sunday	5	12	19	26	2	9	16	23	30	7	14	21	28	7	14	21	28

School Closure Days

School Holiday	
Bank Holiday	
School Training Day	

Message from Albert - dreaming of sausage rolls!!

Woof/ Hello everyone!

Phew, what a quick half term we are having. There's been so much going on. I'm dog tired! I loved getting dressed up for the Coronation Celebration day - it was a real shame that the picnic on the field was washed off although we still had lots of fun in school. I was looking forward to seeing what sandwiches and snacks people would bring and might have going spare...especially sausage rolls....mmmm !!

Well done to all my friends in KS1 and KS2 for having such a paws-ative attitude tot their SATS and for all their hard work. They are all su-paw-stars.

Have a 'wooftastic' half-term everyone!

Love

Albert xx



Want to see more of what goes on at WCLPS?

Then find and follow us on the internet:

School Website: packed with information:

<https://willerbycarrlaneprimary.org.uk/>

Or follow us on **Twitter:**



@WCLPS @WCLPSEYFS @WCLPSYear1 @WCLPSYear 2 etc.

Or, look at our photo albums on **flickr**. Go to

<https://www.flickr.com> and search for WCLPS, or go direct to:

<https://www.flickr.com/photos/165477203@N02/>

Or, watch our videos on **Vimeo**. Go to



<https://vimeo.com/> and search for WCLPS, or go direct to:

<https://vimeo.com/manage/showcases/5676289>



With best wishes from Mr Smith & the whole staff team.

